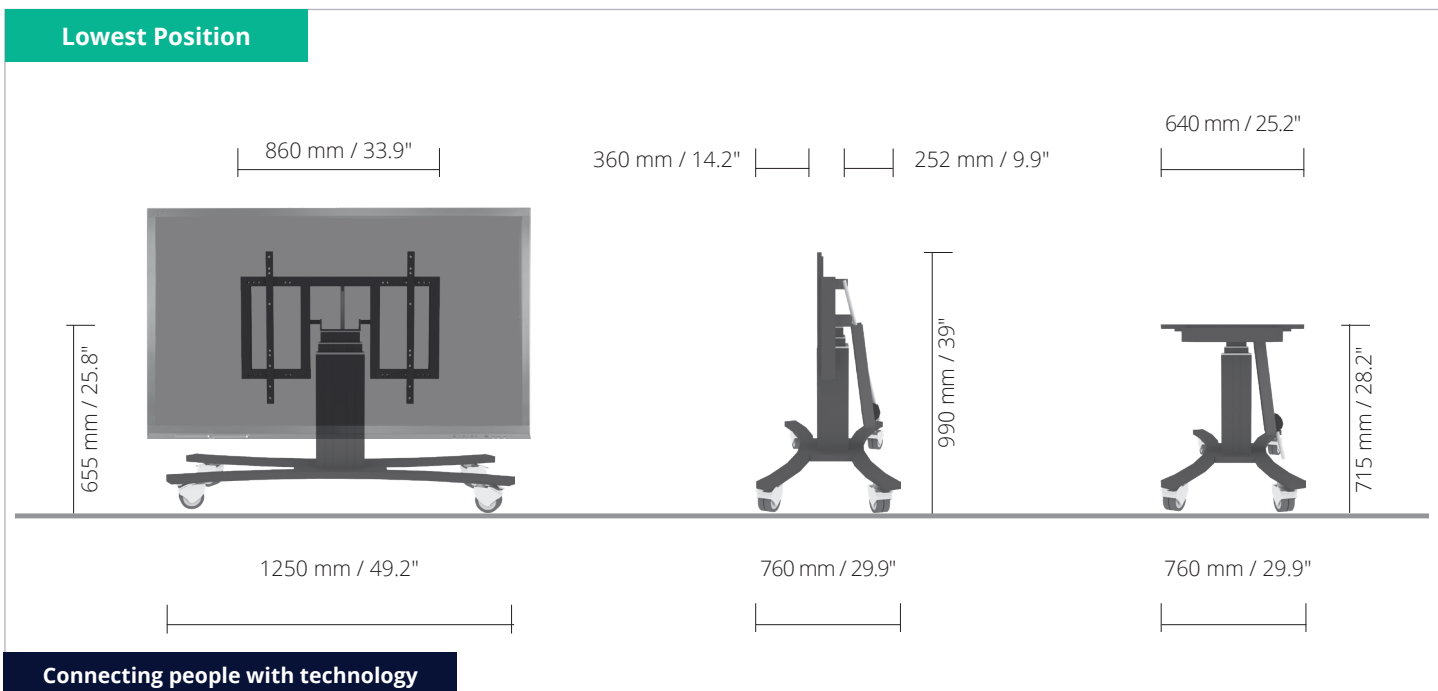
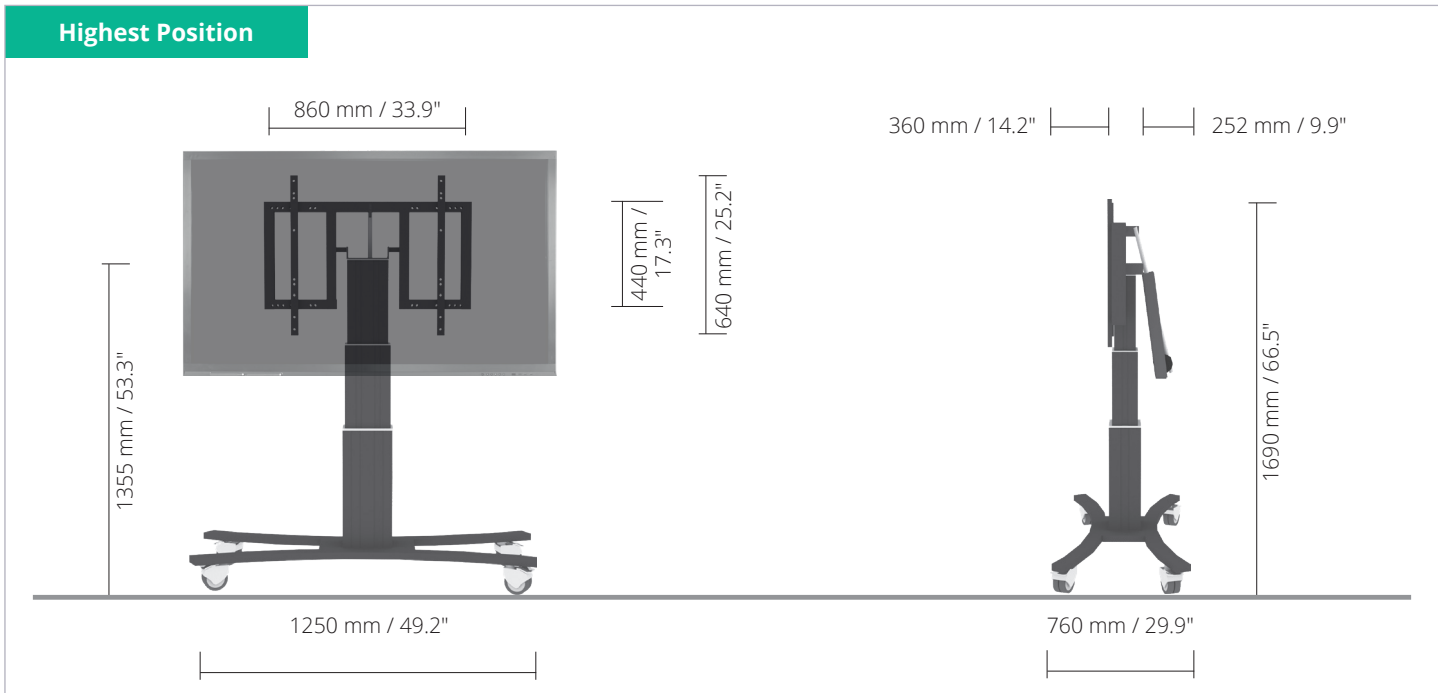


Mobile XL Height & Tilt adjustable trolley for 55" to 65" displays

- Electrical height adjustable column, black anodized.
- 2 x 350 mm of height adjustment.
- C-shaped mobile stand with four heavy duty castors – two with brakes, RAL 9005 deep black.
- Display mount for use with up to 65" screens.
- Maximum load approximately 150 kg / 330.7 lbs.



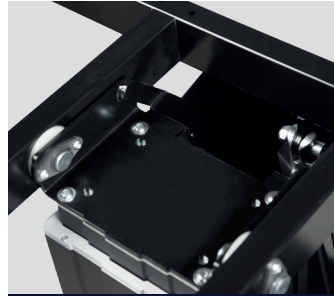
Connecting people with technology

/ Detail views, Accessories & Packing units

Detail views



Screen secured by screws



Tilt function



Smooth running & lockable castors



Wired remote control

Accessories



Side shelf



Lockable wall bracket

Packing units

Item no.	Description	Packing dimensions (mm / ")	Net weight (kg / lbs)	Gross weight (kg / lbs)
CCET-3535B	Electrical height adjustable column, 2 x 350 mm / 13.8" height adjustment, L = 585 mm / 23"	820 x 270 x 220 / 32.3 x 10.6 x 8.7	21,2 / 45.9	24,0 / 53
AF-SCETTA	Display mount	890 x 770 x 480 / 35 x 30.3 x 18.9	22,1 / 48.7	26,8 / 59.1
MST-SCETA-CB	C-shaped mobile stand	1350 x 780 x 120 / 53.1 x 30.7 x 4.7	12,8 / 28.2	15,5 / 34.2
Total weight			55,7 / 122.8	66,3 / 146.2

/ Size Index

